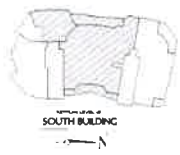
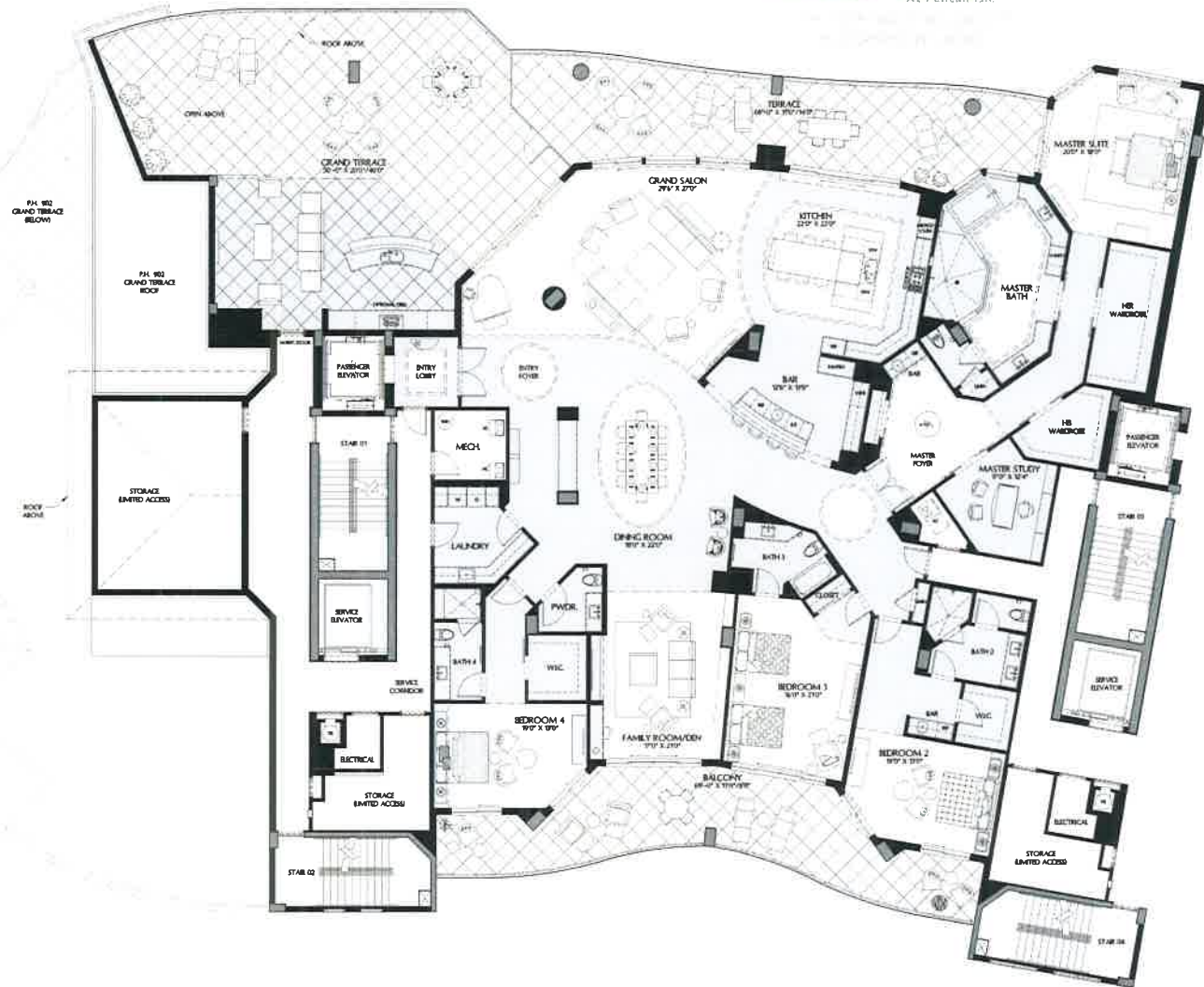


PENTHOUSE RESIDENCE 1002 • LEVEL 10

4-Bedroom, 4.5-Bath, Family Room/ Den, Dining Room, Master Study, Bar, Grand Salon, Grand Terrace

Enclosed Area	6,599 ACSF
Balcony	637 SF
Terrace	775 SF
Grand Terrace	1,734 SF
Total Residence	9,745 SF



ORAL REPRESENTATIONS CANNOT BE RELIED UPON AS CORRECTLY STATING REPRESENTATIONS OF THE DEVELOPER FOR CORRECT REPRESENTATIONS. MAKE REFERENCE TO THIS BROCHURE AND TO THE DOCUMENTS REQUIRED BY SECTION 718.503, FLORIDA STATUTES, TO BE FURNISHED BY A DEVELOPER TO A BUYER OR LESSEE.

*There are various methods for calculating the total square footage of a condominium unit, and depending on the method of calculation, the quoted square footage of a condominium unit may vary by more than a nominal amount. The dimensions stated in this brochure are measured in the exterior boundaries of the exterior walls and the centerline of interior demising walls and, in fact, are larger than the dimensions of the "Unit" as defined in the Declaration of Condominium for AQUA at Pelican Isle Condominium, which are measured using interior measurements. All dimensions are approximate and all floor plans and development plans are subject to change. Information deemed reliable, but not guaranteed. All dimensions are approximate. For general layout and graphic description purposes, only. For exact unit boundaries, please refer to the Declaration of Condominium and its exhibits, including the updated plot plan for Phase II, all of which are included in the Prospectus and Supplemental Prospectus.